

Note: When compressor shut off, it needs 3 minutes to restart.

#### Remote using instrunction

- 1.ON/OFF key:** press to turn on/off the A/C.
- 2.TEMP(temperature setting key):** it can set the temperature from 16℃ to 30℃. The key would not work under the auto or dry mode.
- 3.Mode key:** working modes conversion (auto, cooling, dry, ventilation, heating). In the auto mode, the A/C would come to the heating mode when the room temperature is under 21℃; when the room temperature is higher than 27℃, the A/C would come to the cooling mode. The setting temperature is 24℃.
- 4.Fan key:** fan speeds conversion. In the dry mode, the indoor fan is low speed and work automatically; it is the high speed when the temperature gap between the setting temperature and the room temperature is more than 4℃; the gap of 2-3℃ is the middle speed; the gap of being under 2℃ is the low speed. The wind speed would convert in every minute.
- 5.26℃ key:** 26℃ key would set the A/C in the cooling mode and provide you the environmental-friendly and comfortable temperature.
- 6.SWING key:** press to set the vane to swing or not.
- 7.F.HEAT key:** 20℃ key would set the A/C in the heating mode and provide you the environmental-friendly and comfortable temperature.
- 8.SLEEP:** press to set the sleep mode. In the sleep mode, the A/C would turn off automatically in 8 hours.
- 9.TIMER:** press for timer on/off or cancelling the timer.
- 10.TIME+TIME-:** the time setting rasing from 1 to 16 hours.
- 11.RESET:** press to reset the remote control.

#### AUTO-RESTART FUNCTION

You can decide whether to use the auto restart function by your own condition, setting ways are as following:

1. Turn off the system, press and hold the "MODE" button for 5 seconds.
2. Currently the LCD displays "P1" in the room temperature area and "01" in the setting temperature area. (The default setting is "01" with AUTO-RESTART)
3. No need for AUTO-RESTART FUNCTION. Press ▼ and "00" is displayed in the setting temperature area. Need to switch back AUTO-RESTART. Press ▲ and "01" is displayed in the setting temperature area.
4. Once confirm the setting, press the "POWER" button to save your data and be back to the off state.

#### Instructions for other displays

SET TEMP area displays "dF", means controller is in defrosting state.  
ROOM TEMP area displays "Er" or "NC", means indoor temperature sensor fault.  
In debugging mode, setting temperature area displays "NC" or "Er", means pipe temperature sensor fault.  
TEST button: in power off state, press one time to enter debugging mode, press again to exit debugging mode.

## QD61

- Manual control panel.
- LCD display panel, big and distinct character.
- Auxiliary electric heating
- Outdoor fan controlled independent.
- Auto-restart function.(optional)

- Prevent cool air in heating mode.
- 3 minutes delay to protect the compressor.
- Forced start when power off.
- 5 working modes.
- 3 fan speeds, accurately controlled.

- 2 fan directions.
- Timer on/off.
- Sleep function.
- Double sensors, colourful plug, easy to distinguish.

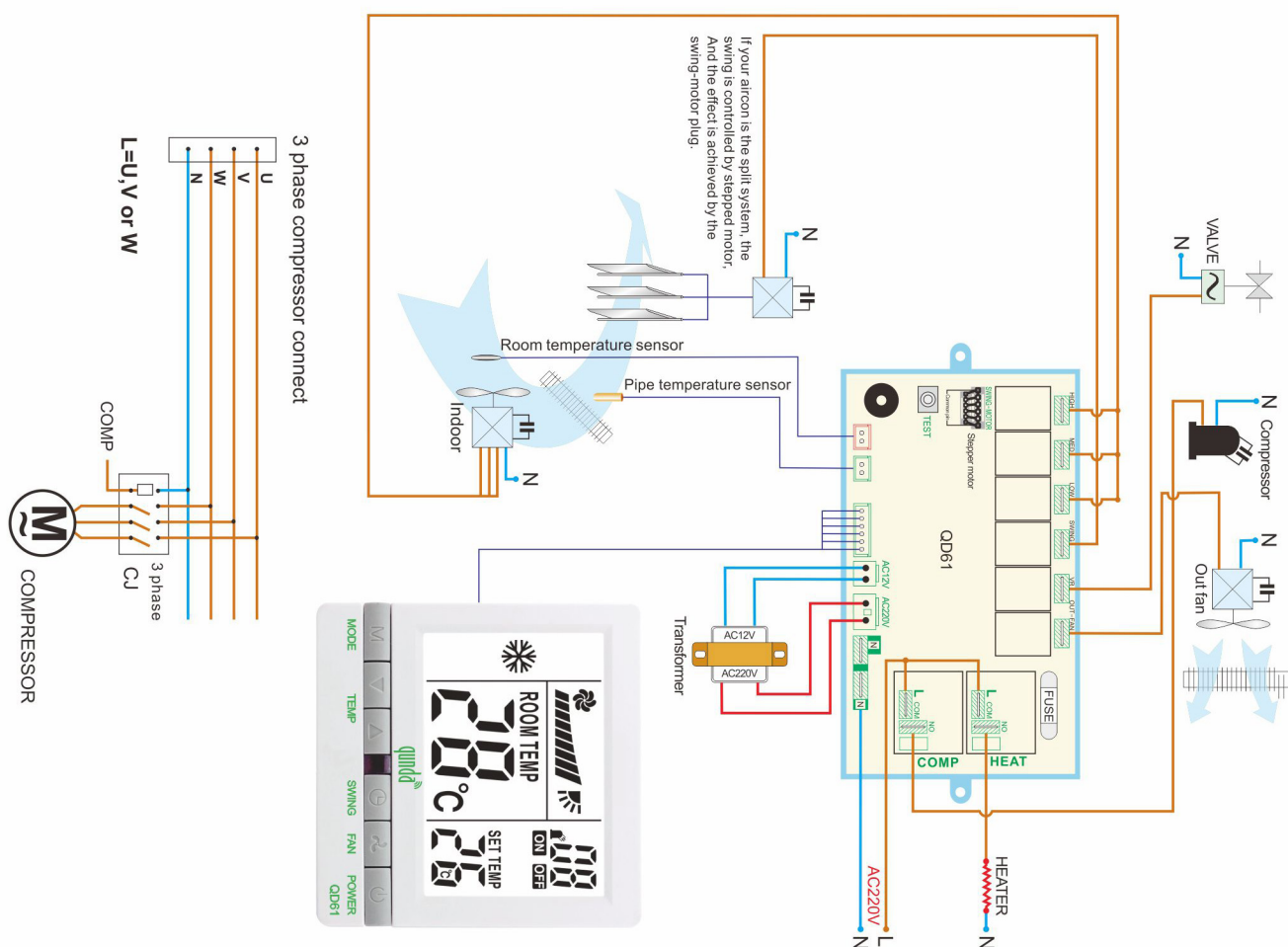
UNIVERSAL FLOOR-STANDING A/C  
CONTROL SYSTEM

## QD61

1. No hard light in front of the IR receiver.
2. If it is split unit, step-motor controls the wind direction by SWING-MOTOR plug. The output plug of step motor(SWING-MOTOR) is 6 pin whose two sides are common port(12V). When connected the common ports of the SWING-MOTOR must plug into the ports of step motor. If the motor works in the wrong direction, insert the plug of the common port for the fan into the other common port of the output socket for the stepper motor.



Before electrifying, please make sure the connection is strictly according to the interface function described in the manual, and ensure its connection is stable and reliable.



If you install it in inverter air conditioner, please don't connect our output of the compressor relay to the inverter compressor.

## QD61

UNIVERSAL FLOOR-STANDING A/C  
CONTROL SYSTEM



MADE IN CHINA



**qunda** Controller Expert

UNIVERSAL FLOOR-STANDING A/C  
CONTROL SYSTEM

# QD61

- Auxiliary electric heating
- Outdoor fan controlled independent
- Auto-restart function (optional)



86 type  
display panel



**qunda** Controller Expert



Please install by certificated technician.  
Please test the system before installation.  
Please avoid strong light before IR receiver.